

Alibaba.com Gold Plus Supplier

Main Product Lines Verification Report

Presented to

Shanghai Long-Join Intelligent Technology Inc.

上海朗骏智能科技股份有限公司

Company Address	2/F, Building 8, DnLin Park, No.129, Hulan Road(W), Baoshan District, Shanghai City, China
Consigner of Assessment:	Alibaba
Gold Supplier Member ID:	cnlongjoin
Gold Supplier Company Name:	Shanghai Long-Join Intelligent Technology Inc.
Contact Person:	Mr. Haidong Huang
Phone Number:	0086-15121099042
Fax Number:	Confidential
Email:	cruise.huang@umelink.com.cn
Website Address (URL):	http://longjoin.en.alibaba.com

Service Provided by TÜV Rheinland

Report No.: 19892535_P+T





Contents

Section 1: Photocell Sensor	5
1.1 The Competitive Advantage of Product Line	5
1.2 Product Line Description.....	5
1.3 Production Capacity	5
1.4 Production Machinery.....	5
1.5 Testing Machinery.....	6
1.6 Production Flow	7
1.7 Export Market Distribution (Previous Year).....	7
1.8 Order Capacity	8
1.9 Certification	8
1.10 Testing Report	8

Report No:	19892535_P+T	Report Date:	13/Jan./2020	Assessed By	Shuai Peng
CONFIDENTIAL		All Rights Reserved		Page No:	2 of 10



Report Number:	19892535_P+T	Assessment Type:	Main Product Lines Verification
Date of Assessment:	13/Jan./2020	Report Date:	13/Jan./2020
Assessor's Name:	Shuai Peng	Validity Period:	14/Jan./2020 -- 13/Jan./2021
Reviewed By:	Lihua Wu	Online Verification:	http://assessed-suppliers.chn.tuv.com

Important Notes:**TÜV Rheinland's Disclaimer:**

This report reflects our findings for the particularly concerned company on the date of our service only. This report does not discharge or release the factory/sellers/suppliers from their commercial, legal or contractual obligations with buyers in respect of products provided by the factory/sellers/suppliers. Any reader other than the party for whom this report has been specifically issued is hereby informed that the general conditions of service of TÜV Rheinland's contain liability limitation provisions.

Alibaba.com's Disclaimer:

This report has been independently prepared by a third party verification agency. The report is provided on an "AS IS" and "AS AVAILABLE" basis. The information contained in the report may change without notice and no obligation is assumed to update the information after publication. Alibaba (including its affiliates) is not involved in the preparation of the report. Publishing of the report by no means means that Alibaba endorses or recommends the report. Therefore, Alibaba cannot be held responsible for any inaccuracy or omission in the report.

To the maximum extent permitted by law, Alibaba expressly disclaims any warranty, expressed or implied, in regard to the report, including any implied warranty of merchantability, fitness for a particular purpose or non-infringement. Your use of or reliance on this report will be at your own discretion and risk. To the maximum extent permitted by law, in no event shall Alibaba be liable for any party for any direct, indirect, punitive, incidental, special or consequential damage costs, expenses, legal fees or losses or any damages whatsoever arising out of or in any way connected with any use of the report even if advised of the possibility of such damages.

Report No:	19892535_P+T	Report Date:	13/Jan./2020	Assessed By	Shuai Peng
CONFIDENTIAL		All Rights Reserved		Page No:	3 of 10



Declaration:




All the information below in this report may cover both the Gold Supplier and its Related Company, except the export records, which only belong to the Gold Supplier. Their relationship has been affirmed according to laws and regulations in China, also it will be clearly displayed below.

Does the gold supplier have a related company?	<input checked="" type="checkbox"/> Yes <input type="checkbox"/> No
If has, Please list the related company name:(abbrev. company A)	Zhejiang Long-Join Electronics Co., Ltd.
Company A's Address:	No. 2099 Yedao Road, Daqiao New District, Economic Development Zone, Haiyan County, Jiaxing City, Zhejiang Province, China
Relationship with Gold Supplier	<input type="checkbox"/> Wholly Owned <input checked="" type="checkbox"/> Shareholder/Partner <input type="checkbox"/> Cooperation Partner <input type="checkbox"/> Kindred between Owners

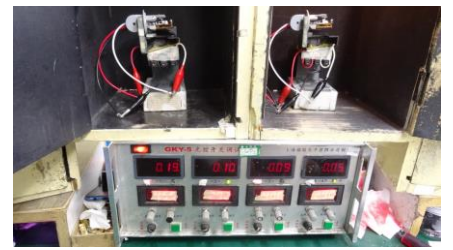
Enterprise relationship chart:



Section 1: Photocell Sensor

1.1 The Competitive Advantage of Product Line					
Our products are very popular in Asia, America, Europe.					
1.2 Product Line Description					
Photocell Sensor used for lighting industry.					
Product Sample					
1. Photocell Sensor	2. Photocell Sensor	3. Photocell Sensor			
					
1.3 Production Capacity					
Production Line Capacity			Actual Units Produced (Previous 12 months)		
Photocell Sensor: 1,000,000 Pieces Per Month			Confidential		
Number of Product Categories			Number of Product Models		
Confidential			Confidential		
1.4 Production Machinery					
Machine Name	Brand & Model No.	Quantity	Number of Year(s) Used	Condition	
Product fully automatic production line	Confidential	1	2	Acceptable	
Riveting press machine	Confidential	13	3	Acceptable	
Switch assembly line	Confidential	8	3	Acceptable	
Ultrasonic welding machine	Confidential	10	5	Acceptable	
Plugin machine	Confidential	2	3	Acceptable	
Wave soldering machine	Confidential	1	3	Acceptable	
Socket assembly line	Confidential	4	3	Acceptable	
Report No:	19892535_P+T	Report Date:	13/Jan./2020	Assessed By	Shuai Peng
CONFIDENTIAL		All Rights Reserved		Page No:	5 of 10

Copper sheet riveting and glue machine	Confidential	3	3	Acceptable
Product fully automatic production line	Riveting press machine		Switch assembly line	
				
Ultrasonic welding machine	Plugin machine		Wave soldering machine	
				
Socket assembly line	Copper sheet riveting and glue machine		N/A	
			N/A	
1.5 Testing Machinery				
Machine Name	Brand & Model No.	Quantity	Number of Year(s) Used	Condition
Projector	Confidential	1	3	Acceptable
Color box	Confidential	1	3	Acceptable
Functional comprehensive tester	Confidential	40	3	Acceptable
Projector	Color box		Functional comprehensive tester	



1.6 Production Flow

No.	Production Process	No.	Production Process	No.	Production Process
1	 Material	2	 Riveting press	3	 Switch assembly
4	 Switch testing	5	 Ultrasonic welding	6	 Testing 1
7	 Plugin	8	 Wave soldering	9	 Socket assembly
10	 Testing 2	11	 Packaging	12	 Products

1.7 Export Market Distribution (Previous Year)

Market	Revenue (USD)	Total Revenue (%)
North America	Confidential	60
South America	Confidential	1



Eastern Europe	0	0
Southeast Asia	0	0
Africa	0	0
Oceania	Confidential	5
Mid East	0	0
Eastern Asia	Confidential	2
Western Europe	Confidential	10
Central America	Confidential	2
Northern Europe	0	0
Southern Europe	0	0
South Asia	Confidential	15
Domestic Market	Confidential	5
1.8 Order Capacity		
1.8.1 Real Case for Lower MOQ		
Products Name	#MOQ (In the last 12 months)	
Confidential	Confidential	
1.8.2 Real Case for Large Contract		
Products Name	#Order (In the last 12 months)	
Confidential	Confidential	
1.8.3 Shortest Lead Time		
Products Name	#Order (In the last 12 months)	Shortest Lead Time (In the last 12 months)
Confidential	Confidential	Confidential
1.9 Certification		
Certification Name	N/A	Certificate Picture N/A
Certified By	N/A	
Certificate No.	N/A	
Product Name & Model No.	N/A	
Available Date-Expired Date	N/A	
1.10 Testing Report		

Report No:	19892535_P+T	Report Date:	13/Jan./2020	Assessed By	Shuai Peng
CONFIDENTIAL		All Rights Reserved		Page No:	8 of 10



Report Name	Testing Report 1	Report Picture
Issued By	DEKRA	
Product Name & Model No.	02-18-AA0003	
Report Date	11/Nov./2019	
Report Name	Testing Report 2	
Issued By	DTi	
Product Name & Model No.	DT1201908120927-2E	
Report Date	22/Aug./2019	
Report Name	Testing Report 3	
Issued By	DTi	
Product Name & Model No.	DTI201908120927-3E	
Report Date	22/Aug./2019	
Report Name	Testing Report 4	
Issued By	DTi	
Product Name & Model No.	DTI201908120927-1E	
Report Date	22/Aug./2019	



Alibaba.com Gold Plus Supplier
Main Product Lines Verification

Report No.: 19892535_P+T

-- End of Report --

Report No:	19892535_P+T	Report Date:	13/Jan./2020	Assessed By	Shuai Peng
<i>CONFIDENTIAL</i>		All Rights Reserved		Page No:	10 of 10